



Information update on Visa applications

新型コロナウイルスの影響による国境移動及びビザ申請手続きについて

Lecturer: Ms. Eva Drhlikova, Deloitte Central Europe  
講演者: エヴァ・ドルフリーコヴァー、デロイト中央ヨーロッパ

17.07.2020  
2020年7月17日



MAKING AN  
IMPACT THAT  
MATTERS  
*since 1845*

# Entry to the Czech Republic

- **Non-EU Nationals – “green” countries (i.e. Japan)**

- If third-country nationals who are on the list of countries with a low incidence of COVID-19 (i.e. so-called “green” countries), the conditions of their entry to the Czech Republic depends on whether their home country has set the rules for travel reciprocally.
  - a) If so, they can arrive in the Czech Republic under the same conditions as before the outbreak of the COVID-19 pandemic and do not have to submit a test or quarantine after entry.
  - b) On the other hand, if the rules are not set reciprocally, the entry of those nationals is limited and governed by the conditions set out in the safeguard measure. However, as it is an entry from a country with a low risk of infection, no test or quarantine is necessary.

- **Non-EU Nationals – “red” countries**

- Foreigners from all other third countries, i.e. from so called “red” countries, can enter the Czech Republic only under conditions defined by protective measures and they must submit a test or undergo quarantine.



# チェコ共和国への入国

- EU域外の国民—「緑国」(低リスク国)(例:日本)

- COVID-19発生率の低い国（**緑国**）リストの国民がチェコ共和国に入国する条件は、それぞれの国が相互国境移動条件のルール設定の有無によります。
  - a) 相互国境移動条件のルール設定有りの場合は、COVID-19感染拡大の前と同様にチェコ共和国に入国可能になりました。入国時のPCR検査結果の提出義務や自宅隔離措置の必要はありません。
  - b) 相互国境移動条件のルール設定無しの場合は、入国条件は保健省発表のいわゆる安全対策によります。ただし、感染リスク低い国からの入国のことになるので、入国時のPCR検査結果の提出義務や自宅隔離措置の必要はありません。

- EU域外の国民—「赤国」(高リスク国)

- 「緑国」以外全ての国(**赤国**)からの外国人はチェコ共和国に入国時に保健省発表の安全対策条件に従う事で可能になります。陰性のPCR検査結果の提出義務もしくは自宅隔離措置のどちらかを選択する必要があります。



# Entry to the Czech Republic

- **Obligations after 1 July 2020**

- The measure instructs that all Czech based entities accepting foreigners (for economic activities) at the territory should provide these foreigners with:
  - accommodation (including the place where a possible quarantine would take place),
  - health care and
  - return to the country of origin in case of loss of the purpose of stay at the territory of the Czech Republic.
- The foreigner is obliged to submit a form confirming this commitment with the application for the relevant residence permit.
- All individuals, including citizens of the Czech Republic, who enter the Czech Republic from a country that is not listed (from the so-called “red” country), are obliged to wear respiratory protective equipment for a limited period of time.



# チェコ共和国への入国

## • 2020年7月1日以降の義務

- 経済目的の為のチェコ共和国への招致した法人や個人は入国者の為に以下のサービス提供義務があります。
  - (隔離義務の可能性もある)宿泊所
  - 医療手配
  - チェコ共和国国内で失職時の帰国手配
- 外国人は滞在許可証の申請書を提出する際に以上のサービスを提供する承認書も提出する必要があります。
- チェコ国民を含む赤国から入国時は期限内にレスピレーターを着用する義務があります。



# ENTRY TO THE CZECH REPUBLIC

## SIMPLIFIED SCHEME FOR ENTRY INTO CZECHIA<sup>1</sup> (from 1. 7. 2020)

	CATEGORY ACCORDING TO THE LEVEL OF RISK	SAME RULES FOR ENTRY INTO CZE AS BEFORE COVID-19	NECESSITY OF PROVING THE PURPOSE OF STAY/NECESSITY OF PCR TEST OR QUARANTINE
CITIZENS OF EU+ COUNTRIES	COUNTRY ON THE LIST	YES	NO/NO
	COUNTRY NOT ON THE LIST	NO	NO/YES
THIRD-COUNTRY NATIONALS	COUNTRY ON THE LIST	YES	NO/NO
	COUNTRY NOT ON THE LIST	NO	YES/YES

**LIST OF THE COUNTRIES WITH A LOW RISK OF COVID-19 CONTAGION (update July 13th)** Andorra, Austria, Australia, Belgium, Bulgaria, Canada, Croatia, Cyprus, Denmark, Finland, France, Germany, Greece, Hungary, Ireland, Iceland, Italy, Japan, Liechtenstein, Latvia, Lithuania, Luxembourg, Malta, Monaco, Netherlands, New Zealand, Norway, Poland, Portugal, Romania, San Marino, Slovakia, Slovenia, Spain, South Korea, Switzerland, Vatican City, Thailand, The United Kingdom

# チェコ共和国への入国

## SIMPLIFIED SCHEME FOR ENTRY INTO CZECHIA<sup>1</sup> (from 1. 7. 2020)

	CATEGORY ACCORDING TO THE LEVEL OF RISK	SAME RULES FOR ENTRY INTO CZE AS BEFORE COVID-19	NECESSITY OF PROVING THE PURPOSE OF STAY/NECESSITY OF PCR TEST OR QUARANTINE
CITIZENS OF EU+ COUNTRIES	COUNTRY ON THE LIST	YES	NO/NO
	COUNTRY NOT ON THE LIST	NO	NO/YES
THIRD-COUNTRY NATIONALS	COUNTRY ON THE LIST	YES	NO/NO
	COUNTRY NOT ON THE LIST	NO	YES/YES

**新型コロナウイルス感染リスクが低い国(2020年7月13日時点):** アンドラ、オーストリア、ベルギー、ブルガリア、カナダ、クロアチア、サイプラス、デンマーク、フィンランド、フランス、ドイツ、ギリシャ、ハンガリー、アイルランド、アイスランド、イタリア、日本、リヒテンシュタイン、ラトヴィア、リトアニア、ルクセンブルク、マルタ、モナコ、オランダ、ニュージーランド、ノルウェー、ポーランド、ポルトガル、ルーマニア、サンマリノ、スロバキア、スロベニア、スペイン、韓国、スイス、バチカン、タイ、イギリス

- **Traveling within the EU**

- Only individuals, who stayed for more than 12 hours within the last 14 days in an EU country marked “red” are obliged to submit the PCR test result or quarantine. The EU “red” country is only Sweden at this moment
- Citizens of other EU member states and foreigners with a residence permit in the EU can travel to the Czech Republic without restrictions, i.e. as in the period before the pandemic.
- In addition to EU countries, the United Kingdom, Iceland, Liechtenstein, Switzerland, Andorra, San Marino and the Vatican are included among the EU countries. In both cases, entry into the Czech Republic is possible for any purpose, including tourism.





- **EU域内の国境移動**

- 過去14日間に高リスク国(赤国)に12時間以上滞在歴がある場合、PCR検査結果を提出または隔離措置の義務が課せられる。現在時点においてEU加盟国で高リスク国(赤国)はスウェーデンです。
- 他のEU加盟国の市民およびEU加盟国で滞在許可書所持の外国人は、制限なくチェコ共和国に入国することができます。(新型コロナウイルス感染拡大以前と同様)。
- EU加盟国、及びイギリス、アイスランド、リヒテンシュタイン、スイス、アンドラ、サンマリノ、バチカンも観光目的でも入国できます。



# Czech Immigration authorities

- **Expiration of the residence permit during the emergency regime**
  - Possibility to stay legally at the territory / leave Czech Republic in 60 days from the end of emergency regime – i.e. until yesterday, July 16, 2020.
- **Visiting of the MOI Immigration offices**
  - Only with a scheduled appointment – very urgent matters (exceptions – e.g. issuance of a bridging label, issuance of an departure order, submission of an application for a child born within the territory).
  - After arriving to the Czech Republic, the foreigner should wait 14 days with a visit of the Ministry of the Interior (for preventive reasons); earlier entry to the authority will be allowed only after submitting a test for SARS CoV-2 with a negative result.
- **Possibility to process agenda remotely (by post / data box)**
  - On 16 July 2020 (yesterday), the transitional period ended, during which extraordinary rules were applied in dealing with the residence of foreigners in the territory. After this date, it is necessary to proceed in full compliance with the law. In this context, we would like to point out in particular that from 17 July 2020, applications for residence permits sent by post will no longer be accepted if personal participation is required by law to submit the application.
- **Confirmation of fulfilling the requirements for issuance of employee card**
  - Possibility of requesting sending via data box

# チェコ共和国イミグレーション機関

- **緊急事態宣言期間中に滞在許可の有効期限切れ**
  - 緊急事態宣言終了後、60日以内にチェコ共和国を出国する義務(2020年7月16日まで)。
- **内務省イミグレーション機関への来館**
  - 事前に予約の必要があります。緊急用件のみ除外(ブリッジビザラベル、出国命令発行、チェコ共和国国内での出生届)。
  - チェコ入国後、14日以内の内務省来館は避けてください。14日以内の来館する場合、PCR検査による陰性証明書を提出する必要があります。
- **リモートで可能な手続き(郵送・データボックス)**
  - 2020年7月16日をもってチェコ共和国内に居住する外国人に関する特別ルール期間が終了しました。7月16日以降は法律に従い全ての必要な手続きを行う必要があります。2020年7月17日以降、個人が内務省に提出をする必要がある場合、郵送による滞在許可証申請書は受け付けられなくなります。
- **エンプロイヤーカードの発行要件の確認**
  - データボックス経由での送信を要求される可能性があります。

# Czech Embassy in Tokio

## Submitting visa and residence permit applications

- the Embassy of the Czech Republic in Tokyo has fully resumed acceptance of visa and residence permit applications and processing of previously lodged applications as well



# 在東京チェコ大使館

## ビザ及び滞在許可申請書の提出

- 在東京チェコ大使館はビザおよび滞在許可の申請を受け付けることになりました。同時に、以前申請されたもので、手続きの停止がなされていたものも、手続きが再開しました。

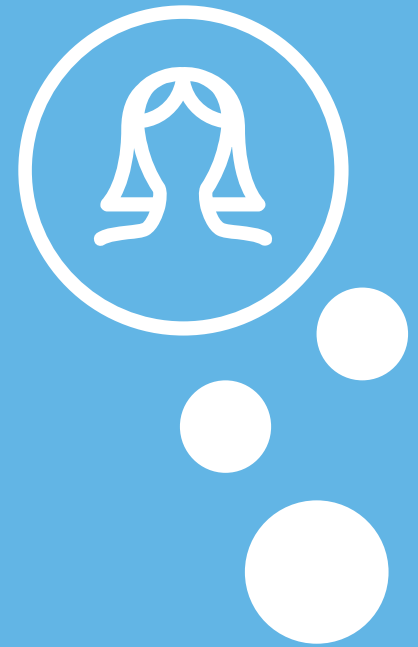




エヴァ・ドルフリーコヴァー  
イミグレーションマネージャー  
M: +420 770 185 524  
[edrhlikova@deloitteCE.com](mailto:edrhlikova@deloitteCE.com)



パヴリーナ・スタホヴァー  
日系企業向けサービス  
M: +420 608 519 692  
[pstachova@deloitteCE.com](mailto:pstachova@deloitteCE.com)





Deloitte refers to one or more of Deloitte Touche Tohmatsu Limited (“DTTL”), its global network of member firms, and their related entities (collectively, the “Deloitte organization”). DTTL (also referred to as “Deloitte Global”) and each of its member firms and related entities are legally separate and independent entities, which cannot obligate or bind each other in respect of third parties. DTTL and each DTTL member firm and related entity is liable only for its own acts and omissions, and not those of each other. DTTL does not provide services to clients. Please see [www.deloitte.com/about](http://www.deloitte.com/about) to learn more.

Deloitte is a leading global provider of audit and assurance, consulting, financial advisory, risk advisory, tax and related services. Our global network of member firms and related entities in more than 150 countries and territories (collectively, the „Deloitte organization“) serves four out of five Fortune Global 500® companies. Learn how Deloitte’s approximately 312,000 people make an impact that matters at [www.deloitte.com](http://www.deloitte.com).

This communication contains general information only, and none of Deloitte Touche Tohmatsu Limited („DTTL“), its global network of member firms or their related entities (collectively, the “Deloitte organization”) is, by means of this communication, rendering professional advice or services. Before making any decision or taking any action that may affect your finances or your business, you should consult a qualified professional adviser.

No representations, warranties or undertakings (express or implied) are given as to the accuracy or completeness of the information in this communication, and none of DTTL, its member firms, related entities, employees or agents shall be liable or responsible for any loss or damage whatsoever arising directly or indirectly in connection with any person relying on this communication. DTTL and each of its member firms, and their related entities, are legally separate and independent entities.

© 2020. For information, contact Deloitte Czech Republic.